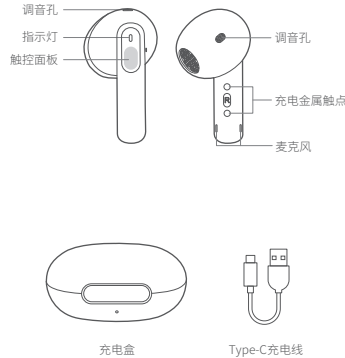




QCY AilyBuds E10 真无线蓝牙耳机

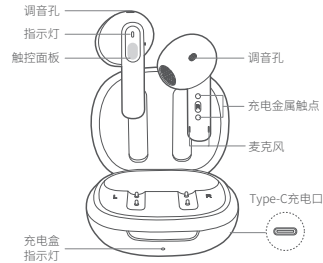
认识耳机



本说明书中的图片均为示意图，可能与实物有偏差，请以实物为准。

使用前，请下载安装QCY手机APP客户端
以获得更便捷的耳机操控体验

功能介绍

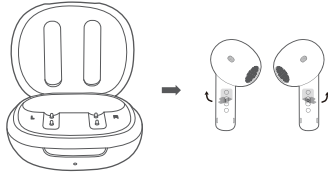


- ② 开机：开盖后取出耳机(耳机在充电盒内)
长按触控面板约1.5秒(耳机在充电盒外)
- ③ 关机：耳机放入充电盒
- ④ 接听/挂断：双击触控面板
- ⑤ 拒接电话：长按触控面板约1.5秒
- ⑥ 播放/暂停：双击触控面板
- ⑦ 上一曲：长按左边触控面板1.5秒
- ⑧ 下一曲：长按右边触控面板1.5秒
- ⑨ 语音助手：三击左耳触控面板
- ⑩ 低延迟：三击右耳触控面板

耳机配对

首次配对方法：

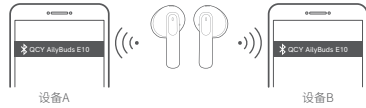
- 1.取出两只耳机，同时撕掉耳机上的隔离膜，再将两只耳机放回充电盒中，合上充电盒盖子。(此步骤为新机激活)
- 2.再次取出两只耳机。
- 3.刷新手机蓝牙设备列表，点击配对“QCY AilyBuds E10”，完成配对。



多设备连接

多设备连接方法：(需要在QCY APP设置开启)

- 1.耳机开机进入配对状态，连接设备A后，从手机端关闭蓝牙。耳机再次进入配对状态。
- 2.设备B打开蓝牙并点击耳机配对名“QCY AilyBuds E10”，完成配对。
- 3.设备A上打开蓝牙并点击已配对过的耳机配对名，配对成功，此时耳机端同时连接两台设备。

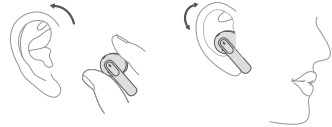


恢复出厂设置

清除配对记录 (此方法用于无法正常连接的情况)

耳机在充电盒，处于充电状态，同时5击左右耳机触控面板，耳机白灯闪5次，闪烁停止后复位完成。
*恢复出厂设置后用首次配对的方法连接即可正常使用。

操作说明



- 1.请正确佩戴左右耳机，戴上耳机后可微微转动调整，找到个人舒适且稳固的位置。
- 2.麦克风口往下，朝嘴巴方向。
- 3.错误佩戴耳机会导致通话，听觉都受到不同程度的影响。

耳机充电

充电中红色灯长亮，充满电后白灯长亮10秒后熄灭

充电盒充电

充电中：白灯闪烁
充满电：白灯长亮

充电盒电量提示

充电盒有电：耳机入盒，白灯亮4秒后熄灭
充电盒低电：耳机入盒，白灯闪烁4秒后熄灭

售后服务

QCY® 品质售后服务承诺：严格按照《中华人民共和国消费者权益保护法》、《中华人民共和国产品质量法》实行售后三包服务，服务内容如下：
在三包有效期内，您可凭购物凭证依照本规定享受免费的修理、更换、退货的权利。
1、自您购买之日起7日内，本产品出现故障，经由QCY售后服务中心确认为产品质量问题，可享受修理、更换、退货的服务。
2、自您购买之日起15日内，本产品出现故障，经由QCY售后服务中心确认为产品质量问题，可享受修理或更换的服务。
3、自您购买之日起12个月内，本产品出现故障，经由QCY售后服务中心确认为产品质量问题，可享受修理的服务。

售后服务与支持
保修期：
自产品购买之日起12个月(请妥善保管购买凭证)。
免费服务：
在产品保修期内，凡属产品本身质量引起的故障，请用户凭购买凭证与经销商取得联系以享受售后服务。
如有任何产品损害或瑕疵非可归责于产品质量本身，则不在保修范围内。有下列情形者不属于保修范围：
1、因火灾、地震、雷击、异常电压、环境因素而发生之故障或损坏的。
2、自行或委托未经原厂授权维修之厂商拆卸、改装或更换非原厂零件。
3、未按使用手册操作或因为使用不当而造成损坏者，如产品浸水、腐蚀、掉落、挤压或露在异常温湿度环境下。

三包凭证

产品信息：
产品型号：_____
订单编号：_____
用户信息：
用户姓名：_____
联系电话：_____
用户地址：_____
退换货原因：_____
购买信息：
销售单位：_____

FAQ

- 1.Q: 只有一只耳机有声音怎么办?
A: 将两只耳机放回充电盒盖盖，再重新取出，查看双耳是否都有声音，若还是只有单只耳机有声音，请对两只耳机恢复出厂设置。
- 2.Q: 手机提示无法连接怎么办?
A: 将手机上的配对记录删除，删除后重新进行搜索配对连接即可。
- 3.Q: 听歌/通话没声音怎么办?
A: 安卓手机在蓝牙连接名字的右边有个设置图标，点击进入，关闭手机音频和媒体音频，再重新开启，若还是无声，请将耳机重新与手机配对连接。
- 4.Q: 为什么视频/游戏有延迟?
A: 受使用环境、网络、手机编解码等因素的影响，会引起手机传译音频数据到耳机时有不同程度的延迟。
- 5.Q: 听到的声音卡顿/断续怎么办?
A: 在使用时若周围有大量的 Wi-Fi、5G/4G 信号、大功率电器等等产生干扰，可能会引起卡顿、断续的情况，换个环境或者重新配对连接就可以解决了。

若有售后服务需求，请联系客服
电话：4008-306-708
网址：www.qcy.com
制造商：东莞市和乐电子有限公司
地址：广东省东莞市道滘镇粤晖路325号

提示

- 1.使用产品前请仔细阅读本使用说明书并请妥善保管；
- 2.首次使用时，请先将本产品充满电；
- 3.如果产品长期(超过2个星期)不用，请对其充电；
- 4.必须选择正规厂家生产且经过国家CCC认证的充电器；
- 5.若手机无法搜索到蓝牙耳机，请将蓝牙耳机重新进入配对模式或将蓝牙耳机恢复出厂设置，若手机程序出错，请把手机蓝牙关闭再开启或重启手机。

电池安全

本产品内置电池已通过国家3C认证
1.请勿拆解或改装电池、插入异物、置入高温、或浸入水或其它液体中,以免引起电池漏液、过热、起火或爆炸。电池只能由制造商更换。
2.请勿跌落、挤压或穿刺电池。避免让电池遭受外部的压力，从而导致电池内部短路和过热。

- 请勿以任何理由拆除或维修改装耳机，否则可能会导致起火，电击甚至彻底损坏本品；
- 请勿将产品置于温度过低或过高(0℃以下或45℃以上的环境温度)下；
- 请避免靠近儿童或动物的眼睛使用产品指示灯；
- 请勿在雷暴天气下使用该产品，雷暴可导致本产品工作不正常，并增加触电的危险；
- 请勿用油及其他挥发性液体擦拭本产品；



长时间使用耳机可能会造成听力损害，请合理安排使用时间。

产品有害物质名称及含量

部件名称	有害物质					
	铅 (Pb)	汞 (Hg)	镉 (Cd)	六价铬 (Cr(VI))	多溴联苯 (PBB)	多溴二苯醚 (PBDE)
外 壳	○	○	○	○	○	○
电路板组件	×	○	○	○	○	○
电 池	○	○	○	○	○	○
充 电 线	×	○	○	○	○	○
附 件	○	○	○	○	○	○

本表格依据SJ/T 11364的规定编制

○：表示该有害物质在该部件所有均质材料中的含量均在GB/T 26572 规定的限量要求以下。

×

X：表示该有害物质至少在该部件的某一均质材料中的含量超出 GB/T 26572 规定的限量要求。

使用年限
如本手册所述，在正常使用条件下，本产品的环保使用期限为10年。
在此期间，产品不会泄露任何危险物质，本产品可以回收，必须按照当地法规处理。



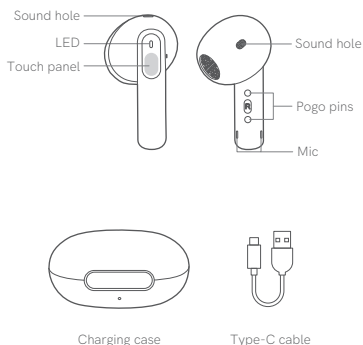


QCY AilyBuds E10 True Wireless Earbuds

Overview



Please download QCY App to experience more functions before use.

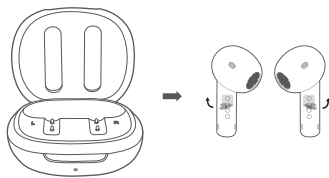


Pictures above are only for reference, please make the object as the standard.

How to Connect

First-Time Connection:

1. Pick up both earbuds, remove their isolation films and push them back in case. Then close the lid to activate them.
2. Pick up them again.
3. On phone, search for QCY AilyBuds E10 and tap to connect.



Multi-Point Connection

(This function should be enabled via QCY APP.)

1. Power on earbuds and they will auto become connectable. Connect them to Device A then turn off Bluetooth on Device A.
2. On Device B, search for QCY AilyBuds E10 and tap to connect.
3. On Device A, tap QCY AilyBuds E10 to finish Multi-Point Connection.



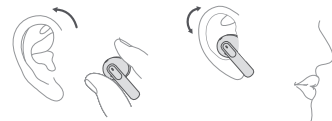
Factory Reset

(Try the following if you can't connect the earbuds to phone.)

Push in earbuds the case to get them charged. Tap both of the panels 5 times to reset the earbuds to factory(LEDs will blink white 5 times).

*Refer to First-Time Connection to get the earbuds connected to phone.

How to Wear



1. Put on earbuds rotate and adjust them to fit yourself.
2. Move the mic towards your mouth.
3. Improper wear might lead to a bad use experience.

LEDs on Earbuds

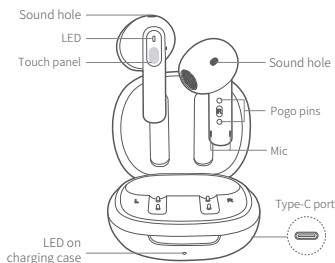
The LEDs will glow solid red when the earbuds are charged and turn white for 10s when topped up.

LED on Case

The LED will blink white when the case is charged and turn white when topped up.

If the case has enough power, the LED will turn on white for 4s once the earbuds are pushed in. Otherwise, the LED will blink white for 4s once they are pushed in.

Functions



- ① Power-on: Open the lid and pick up the earbuds
Or pick up both earbuds and keep touching the panels for 1.5s
- ② Power-off: Push them back in the case
- ③ Answer/end call: Double touch either panel
- ④ Ignore call: Keep touching either panel for 1.5s
- ⑤ Playback/pause: Double touch either panel
- ⑥ Skip track backward: Keep touching the left panel for 1.5s
- ⑦ Skip track forward: Keep touching the right panel for 1.5s
- ⑧ Voice assistant: Triple touch the left panel
- ⑨ Low latency mode: Triple touch the right panel

Warranty

Your QCY product purchase is covered by a one-year limited manufacturer warranty from the date of delivery. Please ensure you retain your purchase receipt. If any defects occur due to quality issues within the warranty period, kindly bring both the warranty card and the purchase receipt to the authorized dealer for complimentary replacement services.

Model Number:
Date of Purchasing:
User's Name:
User's Phone:
User's Address:
Shop's Name:
Shop's Address:
Comments:

The manufacturer's warranty is void under the following circumstances but not limited to:

- Improper or inadequate maintenance or modification.
- Accident, misuse, abuse, contamination, or other external causes.
- The use of unspecified adapter and accessories.
- Malfunctions or damages resulting from natural disasters, earthquakes, lightning, abnormal voltage, or environmental factors.
- Damages that occur as a result of one's failure to follow the instructions.

FCC Statement

This equipment has been tested and found to comply with the limits for a Class B digital device, pursuant to Part 15 of the FCC Rules. These limits are designed to provide reasonable protection against harmful interference in a residential installation.

This equipment generates uses and can radiate radio frequency energy and, if not installed and used in accordance with the instructions, may cause harmful interference to radio communications. However, there is no guarantee that interference will not occur in a particular installation. If this equipment does cause harmful interference to radio or television reception, which can be determined by turning the equipment off and on, the user is encouraged to try to correct the interference by one or more of the following measures:

- Reorient or relocate the receiving antenna.
- Increase the separation between the equipment and receiver.
- Connect the equipment into an outlet on a circuit different from that to which the receiver is connected.
- Consult the dealer or an experienced radio/TV technician for help.

This device complies with part 15 of the FCC Rules. Operation is subject to the following two conditions:

- (1) This device may not cause harmful interference, and
- (2) This device must accept any interference received, including interference that may cause undesired operation.

Changes or modifications not expressly approved by the party responsible for compliance could void the user's authority to operate the equipment.

Wireless frequency: 2.402~2.480GHz
RF power of transmission: <4dBm

Safety Precautions

1. Please carefully read and retain this user manual before using the product.
2. If the product is not used for an extended period (more than 2 weeks), please recharge it.
3. You must choose a charger produced by a legitimate manufacturer and certified by the national safety authority.
4. If your phone cannot detect the Bluetooth earbuds, either re-enter pairing mode or perform a factory reset on the Bluetooth earbuds. If there is a phone program error, close and reopen Bluetooth on the phone or restart the phone.
5. Do not disassemble or modify the battery, insert foreign objects, expose it to high temperatures, or immerse it in water or other liquids to prevent battery leakage, overheating, ignition, or explosion. Battery replacement should only be done by the manufacturer.
6. Do not drop, crush, or puncture the battery. Prevent external pressure that may lead to internal short circuits and overheating.
7. Do not dismantle or modify the earbuds for any reason, as it may result in fire, electronic breakdown, or permanent damage to the product.
8. Do not expose the product to extremely low or high temperatures (below 0°C or above 45°C).
9. Do not the product indicator light near the eyes of children or animals.
10. Do not use the product during thunderstorms, as it may cause abnormal operation and increase the risk of electric shock.
11. Do not use oil or other volatile liquids to clean the product.
12. please do not use this device for long periods of time and at high volume, as there is a risk of hearing damage.



Manufacturer: Dongguan Hele Electronics Co., Ltd.
Address: No. 325 Yuehui Rd. Daojiao Town Dongguan City Guangdong Province China

Notice: This marking indicates that this product should not be disposed with other household wastes throughout the EU. To prevent possible harm to the environment or human health from uncontrolled waste disposal, recycle it responsibly to promote the sustainable reuse of material resources. To return your used device, please use the return and collection systems or contact the retailer where the product was purchased. They can take this product for environmental safe recycling.



the power delivered by the charger must be between min 2 Watts required by the radio equipment, and max 5 Watts in order to achieve the maximum charging speed



FCC ID:
RDR-BH24QT35AL
Made in China
RDR-BH24QT35AR